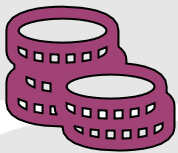


Cyclescheme

Save money & spread the cost on a new bike and accessories.

BPET offers all its employees Cyclescheme, an employee benefit that saves you **25-39%** on a bike and accessories. You pay nothing upfront and the payments are taken tax efficiently from your salary by your employer. See how it works [here](#).



How are cycle to work savings made?

Cycle to work operates as a 'salary sacrifice' employee benefit. This means that you agree to give up part of your salary in exchange for a benefit – in this instance a bike and/or accessories. The salary sacrifice is taken from your gross salary (before tax) which means that you will pay less Income Tax and National insurance. Find out more [here](#).

For more information about the Cyclescheme,
please visit the website [here](#) or email info@bpet.co.uk.

